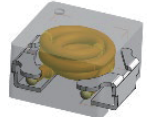


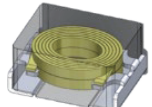
MP Lineup of Automotive Choke



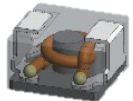
VEHICLE CHOKE SERIES



Molding



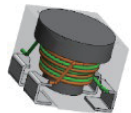
Hot Press



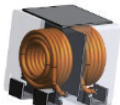
TU core



T core



Coupling



Dual

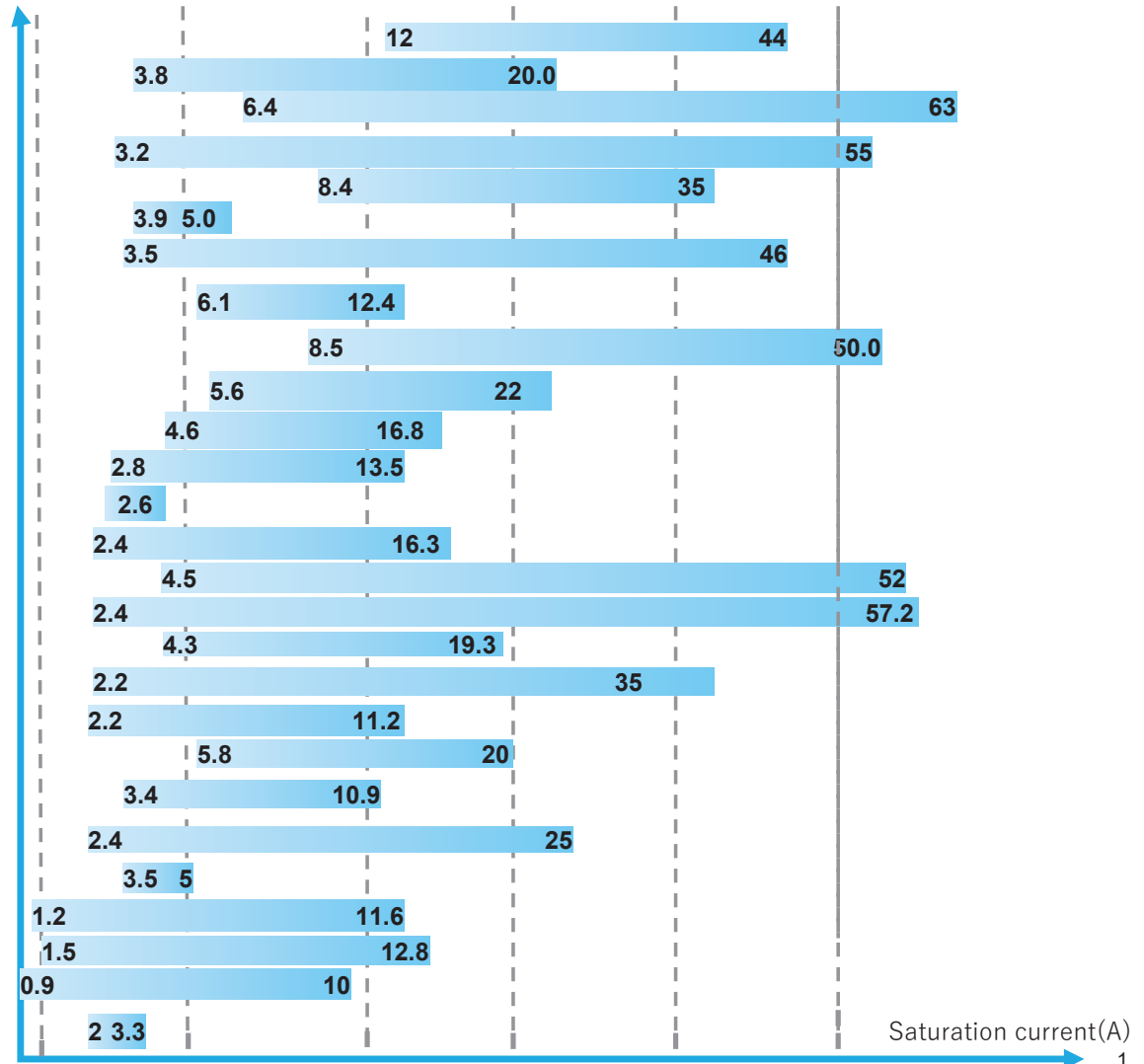


CMC



Hybrid

Size (mm)	Series	Value Range	OpTemp
17x17	VCMV177T:	2.2~33μH	125°C
13x13	VCMT136E:	1.00~47μH	155°C
	VCMV136E:	0.47~68μH	125°C
10x10	VCMT104T:	0.19~47μH	155°C
	VCMV104T:	1.0~18μH	125°C
	VCHA106T:	22~47μH	165°C
	VCHA105D:	0.68~100μH	165°C
	VCSC108T:	10.0~47μH	165°C
8x8	VAMV1009A:	1.0~22μH	125°C
	VCHA085D:	1.0~47μH	165°C
7x7	VAMV0809A:	3.3~22μH	125°C
	VCHA075D:	1.5~68μH	165°C
6x6	VCUW075D:	100 μH	165°C
	VCMT063T:	0.47~22μH	155°C
	VCMV063T:	0.15~15μH	125°C
	VCUW064E:	0.22~100μH	155°C
5x5	VAMV0607E:	1.0~22μH	125°C
	VCUW053T:	0.10~22μH	155°C
	VCMT053T:	0.33~15μH	155°C
	VCMV053T:	0.33~6.8μH	125°C
4x4	VCHA054T:	2.2~22μH	165°C
	VCHA042A:	0.10~10μH	165°C
3.2x2.5	VCHW042A:	3.3~10μH	155°C
	VCTA32251B:	0.15~15μH	165°C
2.5x2.0	VCTA25201B:	0.10~10μH	165°C
2.0x1.6	VCTA20161B:	0.10~10μH	165°C
1.6x0.8	VCTB16081T:	0.47~1.0μH	125°C



Saturation current(A)